

# The way forward on ERP2

**Richard Whitehouse (HR Wallingford)**

# ERP research progress

- EMPHASYS produced Estuary Impact Assessment System (Mk 1)
  - A guide to prediction of morphological change within estuarine systems (2000)
- Uptake project
  - Guidance note for assessing morphological change in estuaries (2002)
- Review and update of research plan (French, Owen, Reeve, 2002)
- New project results since then



# Objectives of present R&D

- Inception phase and consultation
- Enhanced Estuary Impact Assessment System (EIAS)
  - Scope and deliver
- Integrated Estuary Management System (EMS)
  - Scope out EMS and associated requirement for tools that may need to be developed
- Disseminate the outcomes of the project and provide training



# EIAS

- “An ongoing scoping element should also be included to, first, formally define the requirements for an enhanced EIAS (to be delivered under ERP2), and second, set out the requirements and framework for a future EMS.”
  - French, Owen, Reeve 2002



# EMS

- “Whilst focusing on the delivery of an enhanced EIAS, the programme preserves the original vision of an holistic Estuaries Management System (EMS) which takes account of the current and future social, economic and environmental pressures on estuaries.”
  - French, Owen, Reeve 2002



# Improving the focus

- Aim: To assess needs of Operating Authorities, flood mgt industry, other organisation in estuary mgt
- Consultees identified with Defra/EA
  - 29 people consulted to date
- Carried out by
  - Noel Beech (HR Wallingford)
  - Julie Richards (ABPmer)
    - +mgt questions
- Consultation report drafted



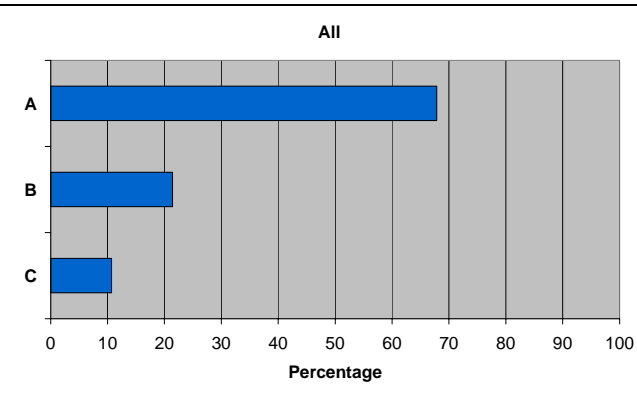
# Initial consultation results (1)

**Prior familiarity with the ERP could be described as:**

A - Familiar

B – Aware of it

C – Not really aware of it

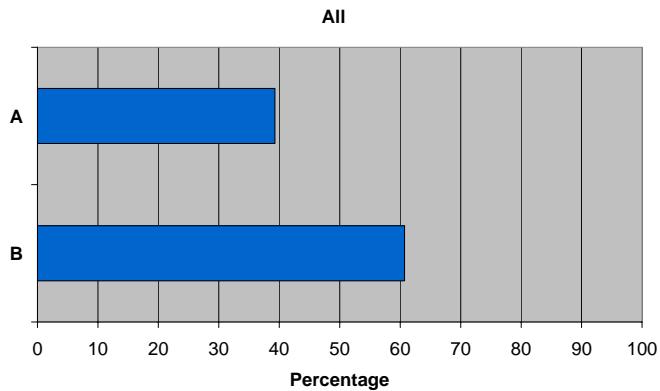


# Initial consultation results (2)

## Previously made use of the ERP outputs:

A - Yes

B - No

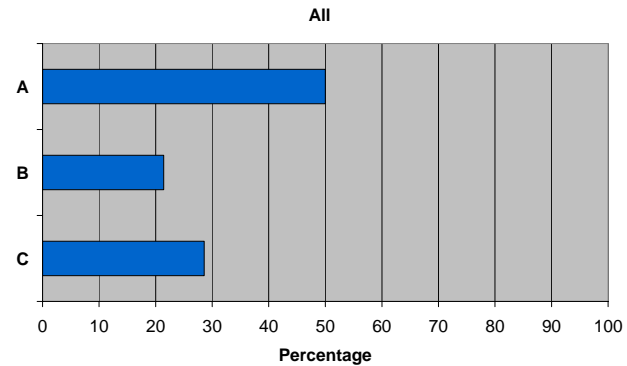


## Previously made use of ERP websites:

A - Yes

B - Aware only

C - No

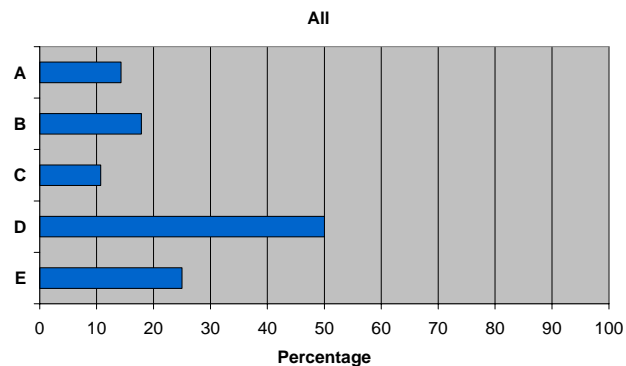




# Initial consultation results (3)

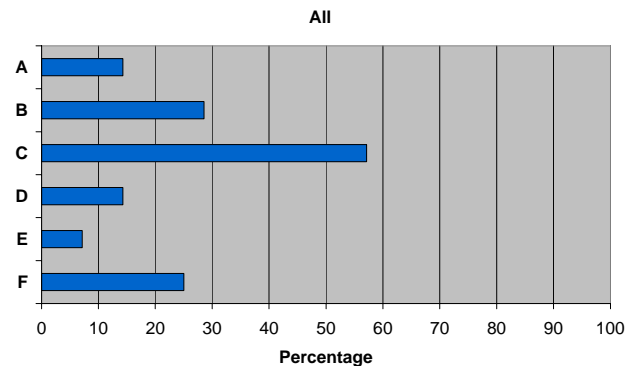
## Improved information and methods would help:

- A – better decision making
- B – better planning
- C – better policy development
- D – improved confidence (organisation and/or public)
- E – independence from those holding the information



## Main improvements that are needed in estuary science:

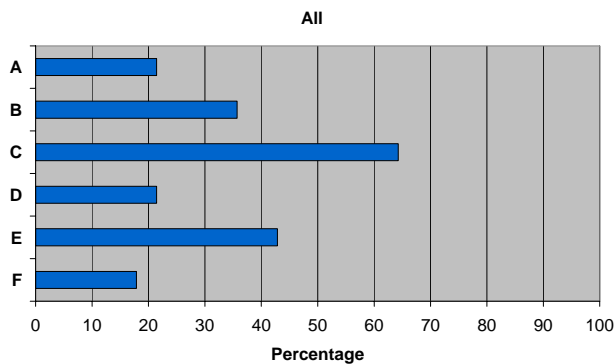
- A – data availability
- B – understanding impact of climate change
- C – reducing uncertainty and/or understanding degree of uncertainty in the result
- D – uptake of research
- E – understanding the hydraulics
- F – understanding the sediment physics (especially muddy vs sandy estuaries)



# Initial consultation results (4)

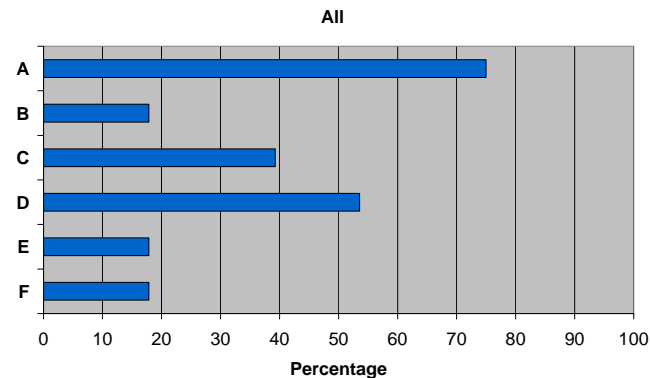
## Preferences for information to be provided or demonstrated:

- A – demonstration project / worked examples
- B – workshop
- C – reports
- D – dvd
- E – website
- F – a book



## Training is needed:

- A – in principles
- B – in details of methods / models
- C – for decision makers
- D – for the operative workers
- E – for stakeholders
- F – non needed



# Next steps

- Move EIAS and EMS forward
  - Summer and early Autumn
- Training and dissemination
  - 2 events in EA training rooms (November 2007)
  - Dissemination London circa. end Feb 2008



# Other feedback

- Feedback on draft EIAS
  - early Autumn
- Feedback from training workshops
  - late Autumn



# FCERM 2007 Conference

- ERP stand at conference
  - More information about ERP, timeline and the projects that have taken place
- Copies of reports available that you can browse through
  - Information on how to obtain copies for your own use
- Demonstrations of some of the tools
- Question sheet that you can fill in to record your views and needs
  - Results used to validate initial consultation



# Further details

- All presentations & leaflets from today on:
  - [www.estuary-guide.net](http://www.estuary-guide.net)
  - From 11<sup>th</sup> July 2007
- Keen to hear your views
  - Kate Scott (Environment Agency)
  - Suresh Surendran (Environment Agency)
  - Richard Whitehouse (HR Wallingford)



# Discussion

- Accessing the ERP outputs
- Applications for products/tools
- How to promote uptake on their use and development
- Requirements of EIAS
- Scoping of Estuary Management System

